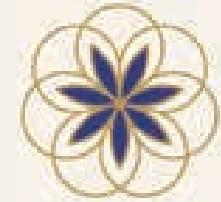




SUMMER ENGLISH  
LANGUAGE COURSES



# NOBEL

International School  
ALGARVE

---

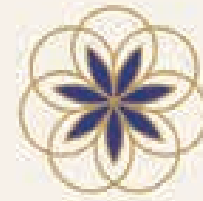
BOARDING &  
SUMMER SCHOOL

3 JULY – 17 JULY  
17 JULY – 31 JULY  
31 JULY – 13 AUGUST

## SUMMER SCHOOL

THE BEST WEEKS  
OF YOUR LIFE!





NOBEL  
International School Algarve

## CONTENTS

- 04 ABOUT NOBEL
- 07 STUDENT WELFARE
- 08 ENGLISH CLASSES
- 10 WEEKLY PROGRAMME SAMPLE
- 12 ACTIVITIES
- 13 EXCURSIONS
- 13 IMPORTANT INFORMATION
- 14 AIRPORT TRANSFERS
- 14 HOW TO APPLY
- 14 PACKING LIST
- 15 CONTACT US



## SUMMER SCHOOL 2018

The Nobel International School Algarve Summer School offers students the unique an established and respected international boarding school while enjoying all of the activities the beautiful Algarve region is known for.

The programme offers the choice of 2, 4 or 6 week sessions for young learners aged 12 to 18 in a muticultural and multilingual environment to maximise their language skills.

The course is relevant to all English language levels and is delivered by the accomplished, native English language teachers from the Nobel International School, Algarve.

**Learn from the Nobel International School Algarve's professional English language teaching team.**

## DATES

3 JULY – 17 JULY

17 JULY – 31 JULY

31 JULY – 13 AUGUST

NOBEL INTERNATIONAL  
SCHOOL ALGARVE  
BOARDING HOUSE







## STUDENT WELFARE

### ACCOMMODATION

Students are accommodated at the Nobel Algarve Boarding House in dedicated double rooms with en-suite bathrooms and separate wings for boys and girls. The Boarding House also offers a shared study area, games room and wifi.

**Qualified, caring staff are available to students 24 hours a day.**

### WELLBEING

The safety and wellbeing of the students is of the utmost importance to staff who are there 24 hours per day to assist with health care and other needs.

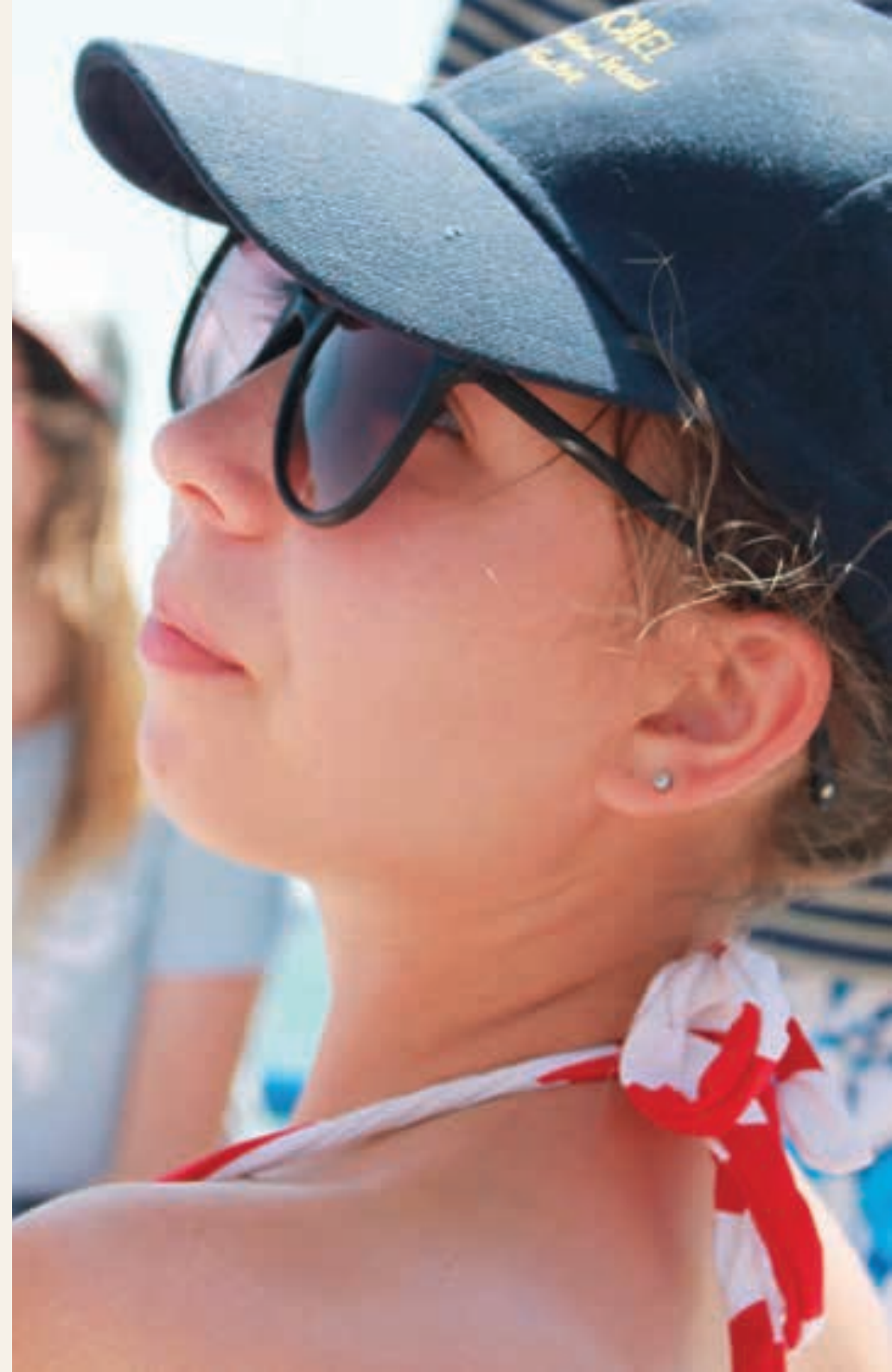
### HEALTHY EATING

A nutritionally balanced breakfast, lunch, dinner and two snacks are included for all students with packed lunches provided for day trips. Special dietary requirements can be accommodated upon request.

## THE NOBEL ALGARVE CAMPUS

The school stands in extensive grounds in the countryside on the Algarve coast, with classrooms, science laboratories, art and design technology studios, dedicated music spaces, dining halls, common areas, libraries and IT workshops.

Sporting facilities include an official inline speed skating rink, 7-a-side and 5-a-side football fields, volleyball, basketball and tennis courts, a cross-country track, dedicated gym and a karate dojo.





## ENGLISH CLASSES

The Summer School offers an individualised intensive English language course and allows students to progress through the course as they develop greater fluency to ensure the optimum level of learning for each student.

At the Nobel Algarve Summer English language school, students rapidly develop advanced language skills under the tuition of professionally qualified English teachers.

The course is designed to allow intensive tuition in the morning session followed by summer themed afternoon activities to encourage students to put their learning into practice.

As well as dedicated English language classes, students receive English language lessons in topics including History and The Arts.

Language topics are chosen to encourage lively discussions in class with the emphasis on improved listening and speaking skills which is facilitated by using a wide range of classroom activities including drama.

## COURSE DETAILS

- 20 English lessons per week
- Active, immersive English language tuition in small classes
- Qualified, globally sourced professional English language teachers from the internationally respected Nobel International School, Algarve
- Exposure to students from all over the world in a secure environment on the beautiful Algarve coast, encouraging independence, cultural awareness and the beginning of lifelong friendships
- Formal certificate at completion of course







# SAMPLE PROGRAMME – WEEK I

	TUESDAY	WEDNESDAY	THURSDAY	FRIDAY	SATURDAY	SUNDAY	MONDAY	
8h00	Arrivals Free Time	Breakfast					Full Day Excursion	
8h45		Bus To School						Bus to School
9h00		Assessment	Lessons		Jet Ski (Nautical Activities)	Lessons		
10h00			Break			Break		
11h00		Assessment	Lessons			Lessons		
11h15			Lunch					Lunch
13h30	Arrivals Free Time	Coastal Hike	Canopying	Lazer Tag	Water Park	Beach / Pool Activities		
14h30								
15h30								
16h00	Regroup							
19h00	Welcome BBQ	Dinner						
19h30		Evening Entertainment						
20h30		Bedtime						
23h00								



## SAMPLE PROGRAMME – WEEK 2

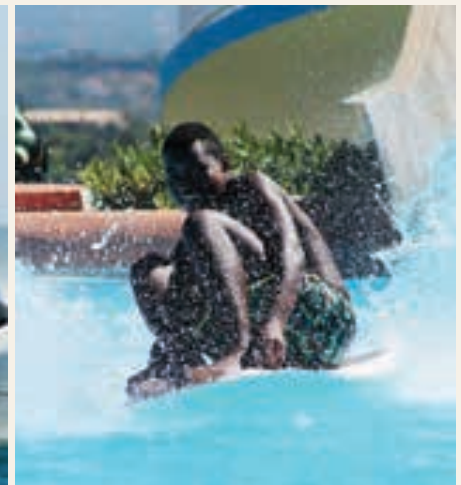
	TUESDAY	WEDNESDAY	THURSDAY	FRIDAY	SATURDAY	SUNDAY	MONDAY
8h00	Breakfast						
8h45	Bus To School					Full Day Excursion	Bus to School
9h00	Lessons				Jet Ski (Nautical Activities)		Examinations
10h00	Lessons						Examinations
11h00	Break						Break
11h15	Lessons				Examinations		
13h30	Lunch						Lunch
14h30	Zoomarine	Foot Golf	Paintball	Surf School	Water Park		Shopping Centre
15h30							
16h00							
19h00	Regroup						
19h30	Dinner						
20h30	Evening Entertainment					Farewell Party	
23h00	Bedtime						



## ACTIVITIES

The Nobel Algarve Summer School offers students a unique opportunity to refine their English Language skills while enjoying a unique programme of activities and excursions to ensure their summer experience is a memorable one!

- Nautical Activities
- Water parks
- Canopying / High Rope
- Paintball
- Indoor and outdoor games
- Watersports
- Pool and Beach
- Coastal Hikes
- Quizzes & Karaoke
- BBQs
- Table Football & Air Hockey
- Playstation
- Movie Nights
- Footgolf
- Kayaking
- Laser Tag





## EXCURSIONS

- Castle visits
- Local museum visits
- Cultural & pedagogical visits
- Educational hikes
- Sea life or wildlife parks
- Shopping trips
- Boating

Travel and entrance fees for all organised trips are included in the price of the course.

## IMPORTANT INFORMATION

### Nobel Algarve Summer School Course includes:

- “Meet and Greet” and transfers from Faro/Lisbon Airport
- Accommodation
- Full catering
- Excursions, trips and activities
- Laundry Service
- Use of safety deposit box
- End of Course certificate
- All tuition and classes
- Beach towels

### OPTION 1 | CLASSES:

#### Weekdays only:

**Mornings:** English classes | 9am to 1.30pm

**Price:** 230 € / week

*(includes: classes and final course certificate issued by a certified external examination centre)*

### OPTION 2 | CLASSES + ACTIVITIES:

#### Weekdays only:

**Mornings:** English classes | 9am to 1.30pm

**Afternoons:** activities | 2.30pm to 7.30pm

**Price:** 380 € / week

*(includes: classes, lunch, activities transportation and final course certificate issued by a certified external examination centre)*

### OPTION 3 | FULL PROGRAMME:

**Mornings:** English classes | 9am to 1.30pm

**Afternoons:** activities | 2.30pm to 7.30pm

**Evening and weekend entertainment | Full Board**

**Price:** 950 € / week

*(includes: classes, activities, accommodation, full board, transportation and final course certificate issued by a certified external examination centre)*



## AIRPORT TRANSFERS

Your child will be met, greeted and collected from the airport by the Nobel International School Algarve staff and taken directly to the boarding house from either Faro or Lisbon Airport.

Transfers are provided on Tuesdays between 10:00 and 18:00.  
(Further transfers can be arranged at a cost).

The Nobel International School Algarve staff will be identified accordingly and will carry identifiable flight boards

Parents/guardians may choose to use alternative transportation to the Nobel International School Algarve. It is important to state travel arrangements and approximate time of arrival. We request that students be dropped off between lunch and dinner on arrival days and collected after breakfast on departure days.



## HOW TO APPLY

1. Complete our on line enquiry form [www.nobelalgarve.com](http://www.nobelalgarve.com) or email [summer@nobelalgarve.com](mailto:summer@nobelalgarve.com) for more information.
2. Nobel Algarve staff will contact you within 48 hours to discuss your requirements.
3. Once availability is confirmed you will receive an application pack.
4. Complete the application pack in full including personal details, dates, transfers and medical requirements (*if any*) and return with all required documentation. We will also require a deposit of €500 or full payment to secure booking.
5. Confirmation will be sent within 24 hours of receipt of application pack and payment of deposit.
6. Remaining fees (*if any*) to be paid by the 15th of June 2018.
7. **Get packing!**

## PACKING LIST

- Warm clothing (*evenings can be chilly*)
- Flip-flops
- Personal toiletries (*also available locally, not included*)
- Cap/Hat (*very important*)
- Sun protection, lip cream and insect repellent (*also available locally, not included*)
- At least 7 T-shirts
- Small backpack for outings
- At least 2 pairs of shorts
- Comfortable shoes for outings
- A pair of trainers
- Swimming trunks/ bathing-suit
- Every day clothes

# CONTACT US

Students visiting the Nobel International School Algarve can fly to Lisbon International Airport or Faro International Airport. Faro being the closest to the school at approximately 50 km away, whereas Lisbon is approximately 250 km north of the School. Transfers can be arranged from either airport.

Faro International Airport (FAO) is currently the main tourist airport in Portugal. With its modern and functional infrastructure, Faro Airport provides high quality services for the Algarve and the Spanish province of Huelva. Just 4 km from the capital of the Algarve, in the middle of a stretch of coastline extending from Cabo de São Vicente to the Doñana Natural Park in Huelva, the airport supports a vast number of airlines and tour operators.

Lisbon International Airport (LIS) is 7 km from the city centre and is the largest Portuguese airport used by 15.3 million passengers annually. The airport is served by good public transport, including metro, coaches and taxis.



## CONTACTS


 [info@nobelalgarve.com](mailto:info@nobelalgarve.com)  +351 282 342 547



NOBEL  
International School Algarve

[WWW.NOBELALGARVE.COM](http://WWW.NOBELALGARVE.COM)

CONTACT US

 [info@nobelalgarve.com](mailto:info@nobelalgarve.com)  
+351 282 342 547

